

The 'at' Word Family

at	sat
bat	tat
cat*	vat
fat	chat
hat	flat
mat	gnat
pat	spat
rat	that

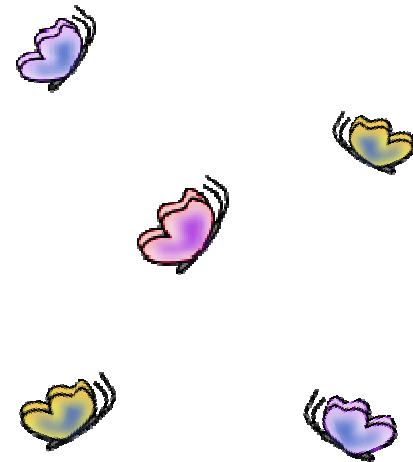


Word Families
The 'at' Family

©2008 Thatresourcesite.com

The 'it' Word Family

it	sit
bit	wit
fit	mitt
hit	flit*
kit	grit
lit	skit
pit	slit
quit	spit



Word Families
The 'it' Family

©2008 Thatresourcesite.com